

# Pack 1 – Autumn 2018

## FSM pupils

2017/18 performance data

Cynghair o 6 awdurdod lleol yw ERW a reolir gan gyd-bwyllgor cyngor a busnes lleol. Y nod yw gweithredu strategaeth a chynllun busnes rhanbarthol cytunedig i wellhau'r arolyddiaeth.  
ERW is an alliance of 6 local authorities governed by a legally constituted joint committee.  
Its aim is to implement the agreed regional strategy and business plan to support school improvement.

## Swansea



Publication date:

31/10/2018

## Pack 1 – Autumn 2018

- In the charts from Page 2 onwards, the dark blue line shows the performance of FSM pupils, while the light blue is the LA's overall performance.
- Since cohorts may be very small (especially in Welsh), care should be taken when analysing the data within this pack.

### LA's contextual data

#### 1. Pupil numbers, by gender

Chart 1: Number of FSM pupils in LA's schools

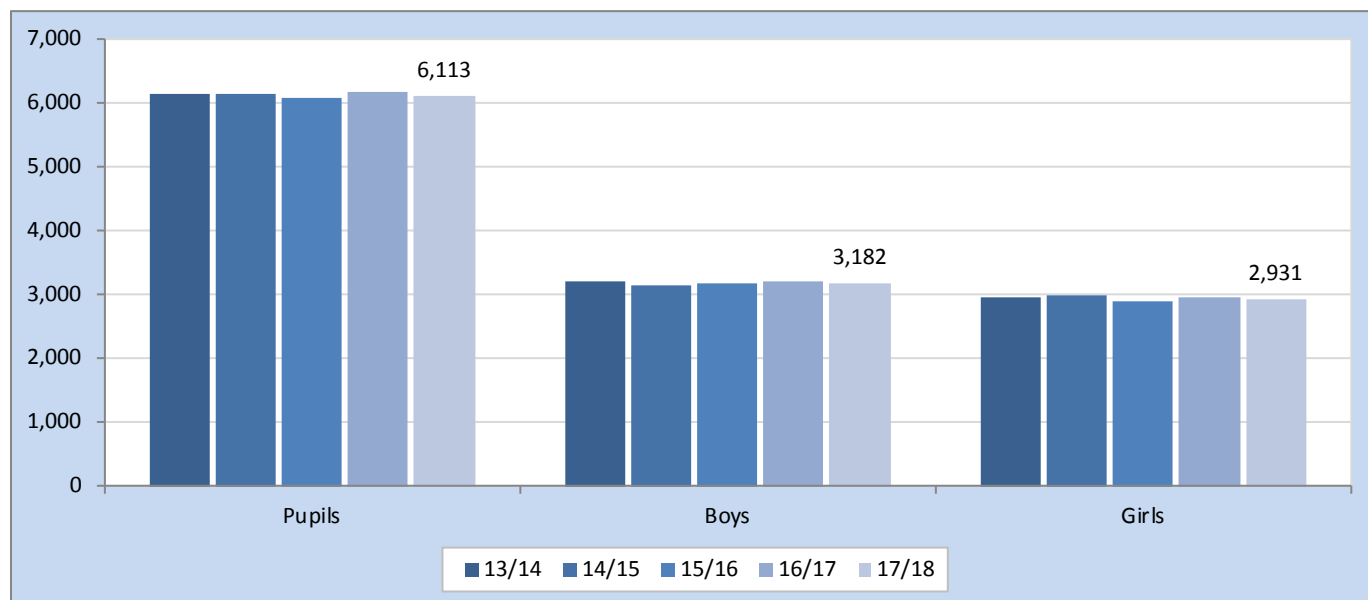


Table 1: Percentage of half day sessions attended: 2013/14 - 2017/18

Primary	2013/14	2014/15	2015/16	2016/17	2017/18
FSM pupils	92.5	93.2	93.1	93.4	~
All pupils	94.4	94.9	94.9	95.0	~
Secondary	2013/14	2014/15	2015/16	2016/17	2017/18
FSM pupils	89.2	90.3	91.0	91.3	90.6
All pupils	93.3	94.0	94.3	94.3	94.2

## How well do the pupils perform at Foundation Phase?

Number of FP pupils

(FPI)	13/14	14/15	15/16	16/17	17/18
Pupils	531	591	554	532	571

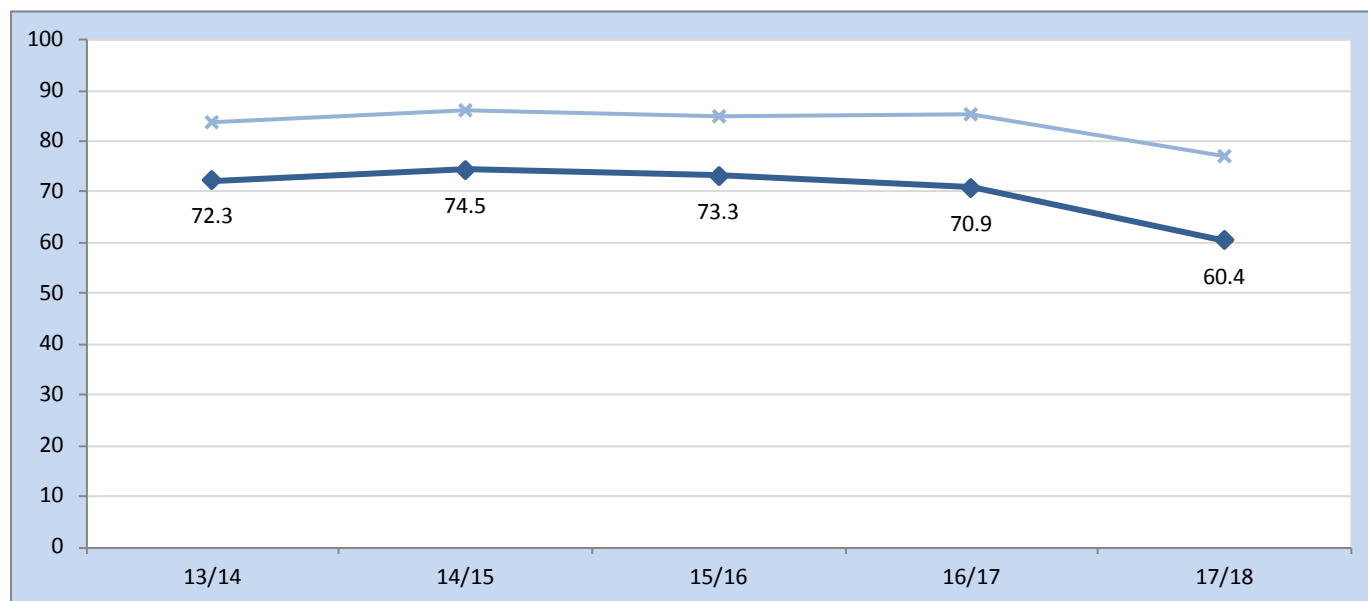
The Foundation Phase’s mandatory areas of learning (reporting-wise) are:

- Language, literacy and communication skills in Welsh (**LCW**) OR Language, literacy and communication skills in English (**LCE**)
- Mathematical development (**MDT**)
- Personal and social development, well-being and cultural diversity (**PSD**)

The Foundation Phase Indicator (**FPI**) is achieved by a pupil if Outcome 5 or greater is achieved in LCW/LCE, MDT and PSD in combination.

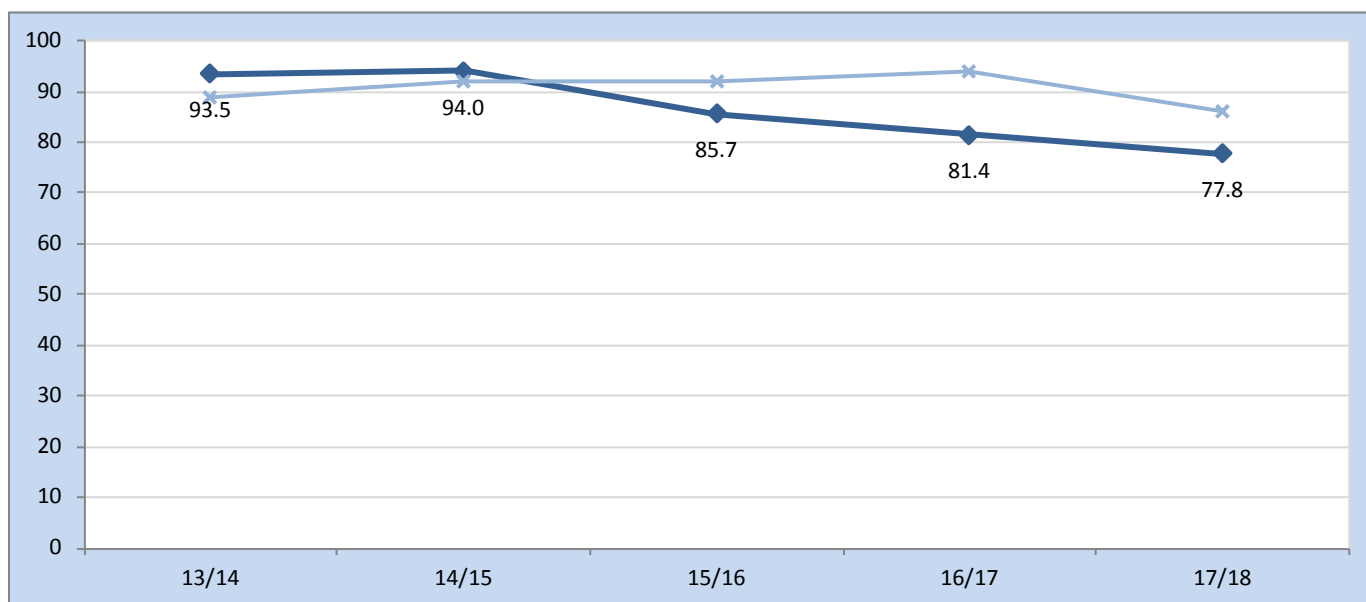
### Foundation Phase Outcome (FPI)

Chart 2: Percentage of pupils achieving the FPI: 2013/14 - 2017/18



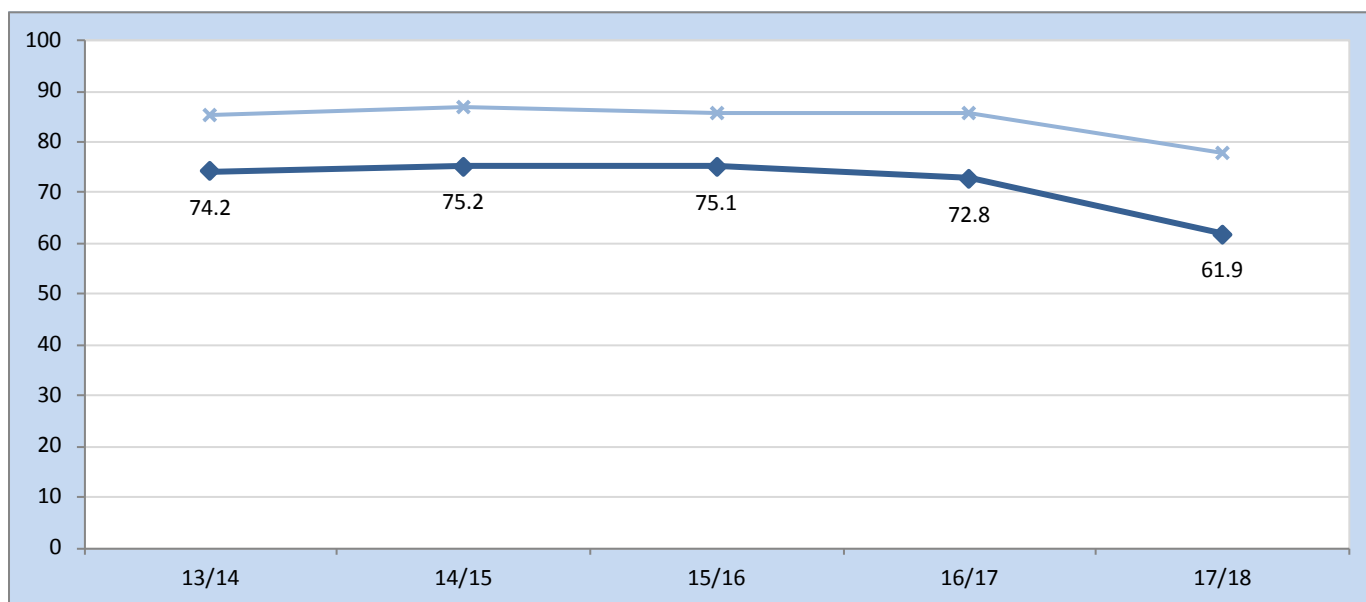
**Language, literacy and communication skills in Welsh (LCW)**

**Chart 3: Percentage of pupils achieving the expected level (Outcome 5+) in LCW: 2013/14 - 2017/18**



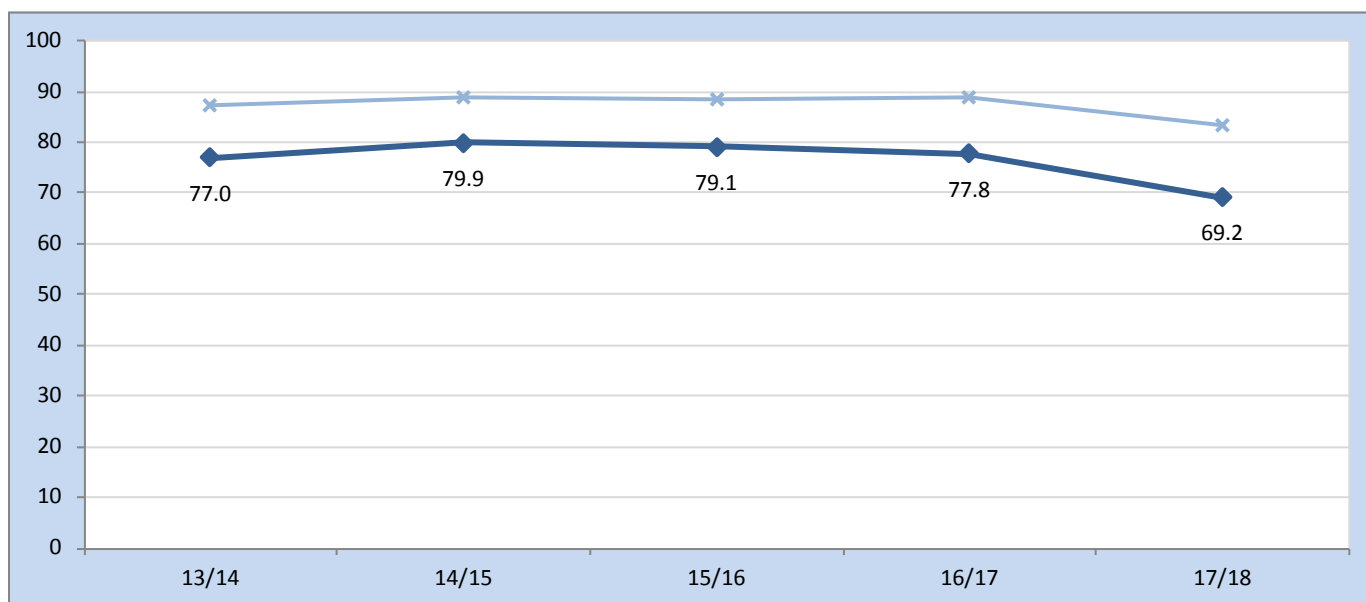
**Language, literacy and communication skills in English (LCE)**

**Chart 4: Percentage of pupils achieving the expected level (Outcome 5+) in LCE: 2013/14 - 2017/18**



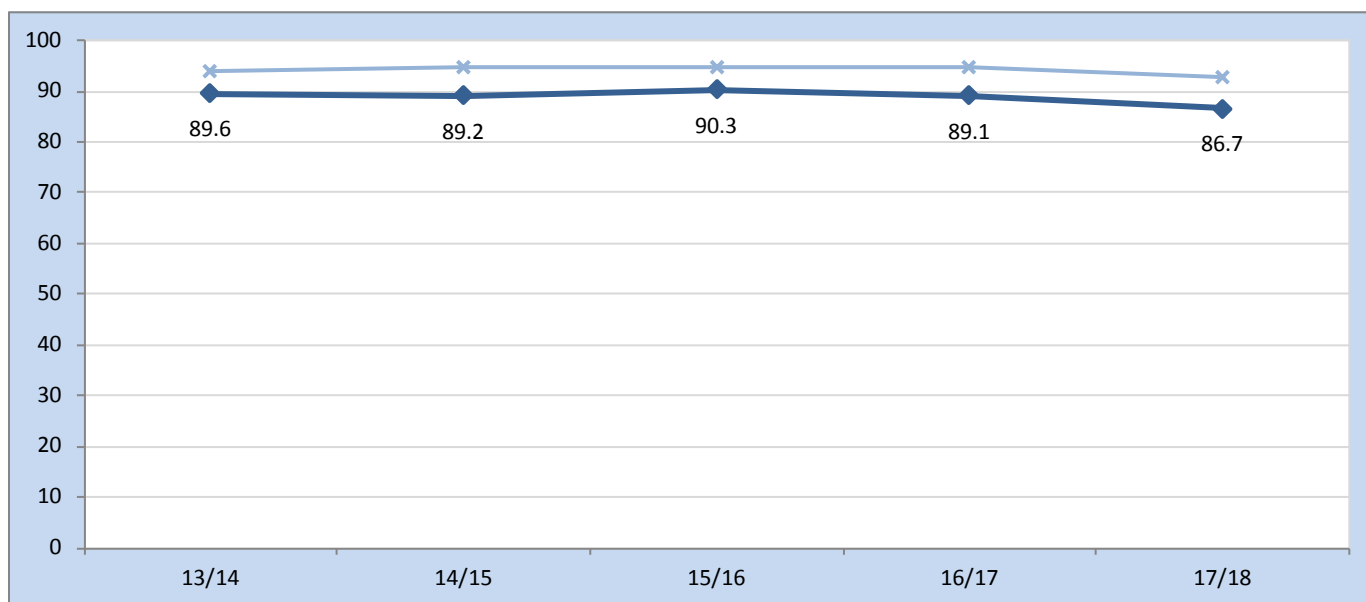
**Mathematical development (MDT)**

**Chart 5: Percentage of pupils achieving the expected level (Outcome 5+) in MDT: 2013/14 - 2017/18**



**Personal and social development, well-being and cultural diversity (PSD)**

**Chart 6: Percentage of pupils achieving the expected level (Outcome 5+) in PSD: 2013/14 - 2017/18**



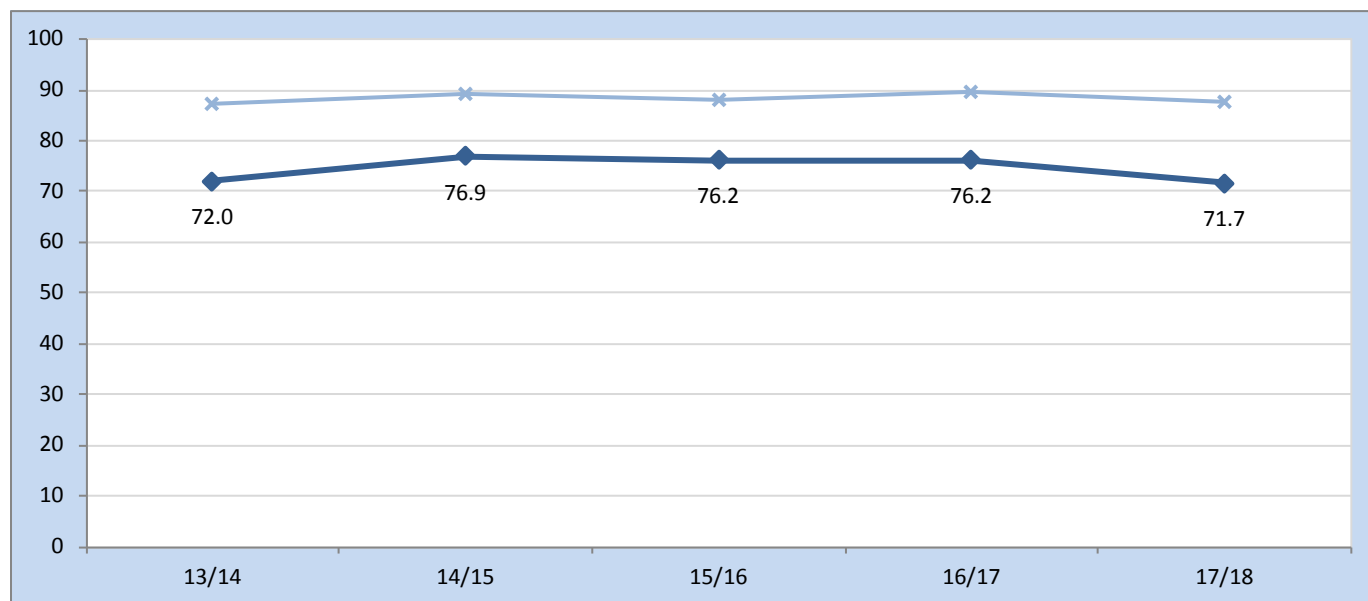
## How well do the pupils perform at KS2?

Number of KS2 pupils

(CSI)	13/14	14/15	15/16	16/17	17/18
Pupils	454	476	504	449	499

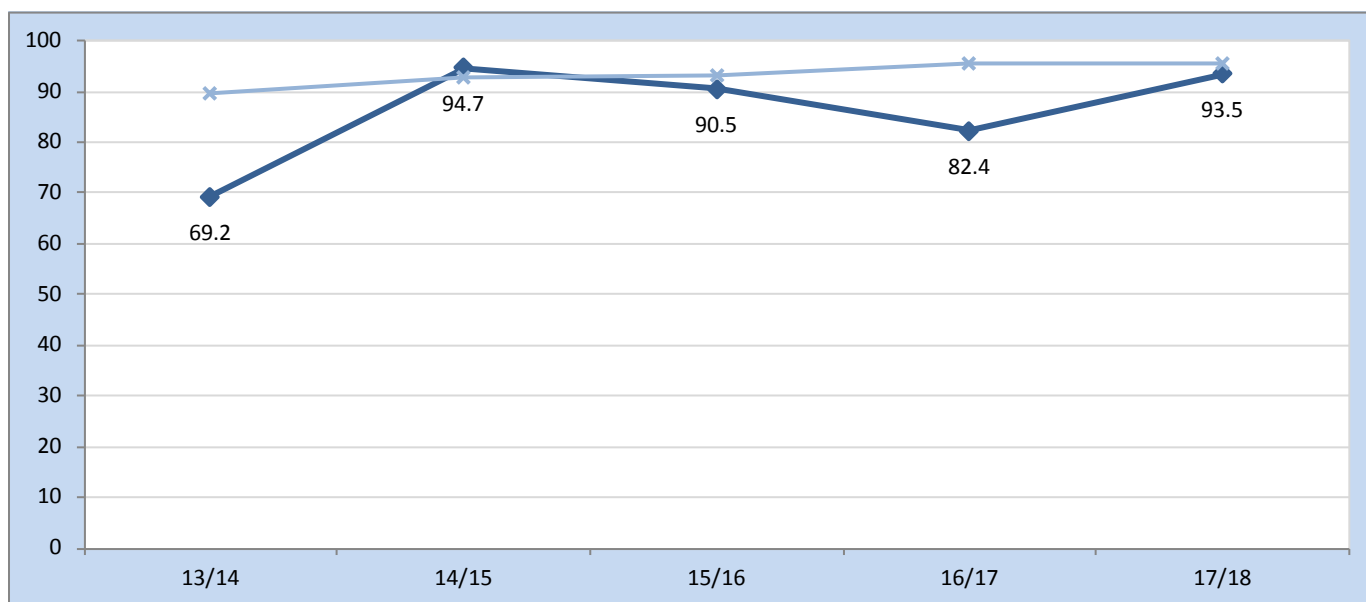
### Core Subject Indicator (CSI)

Chart 7: Percentage of pupils achieving the CSI: 2013/14 - 2017/18



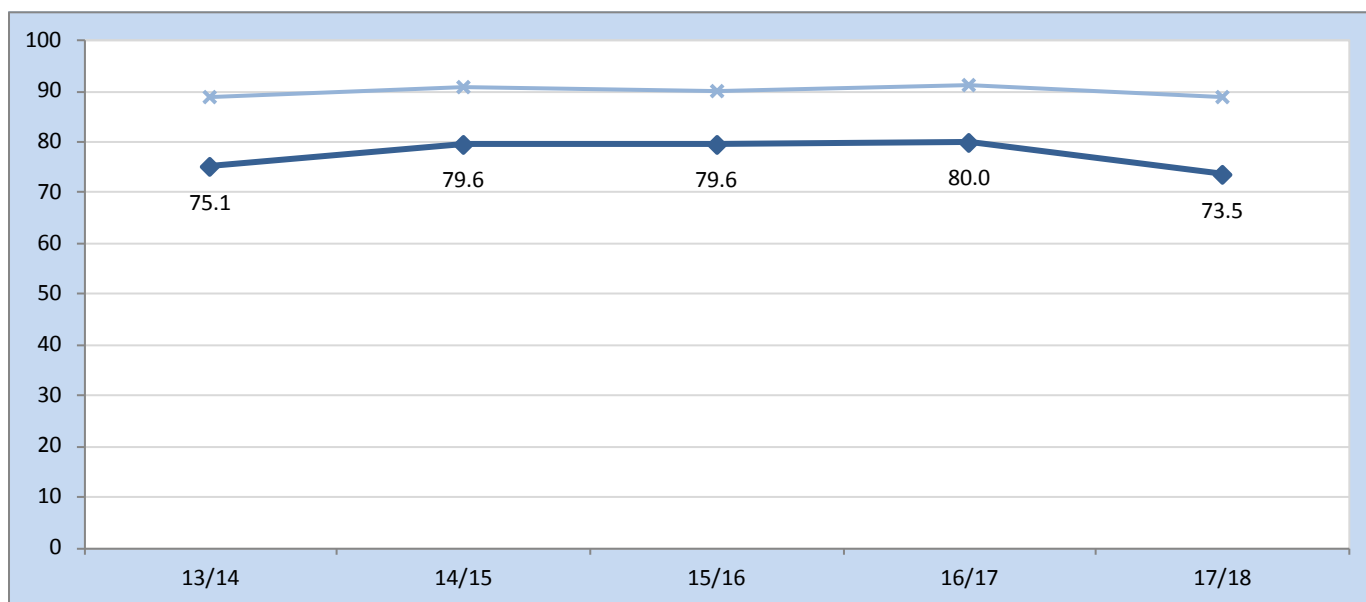
Welsh

Chart 8: Percentage of pupils achieving the expected level (Level 4+) in Welsh: 2013/14 - 2017/18



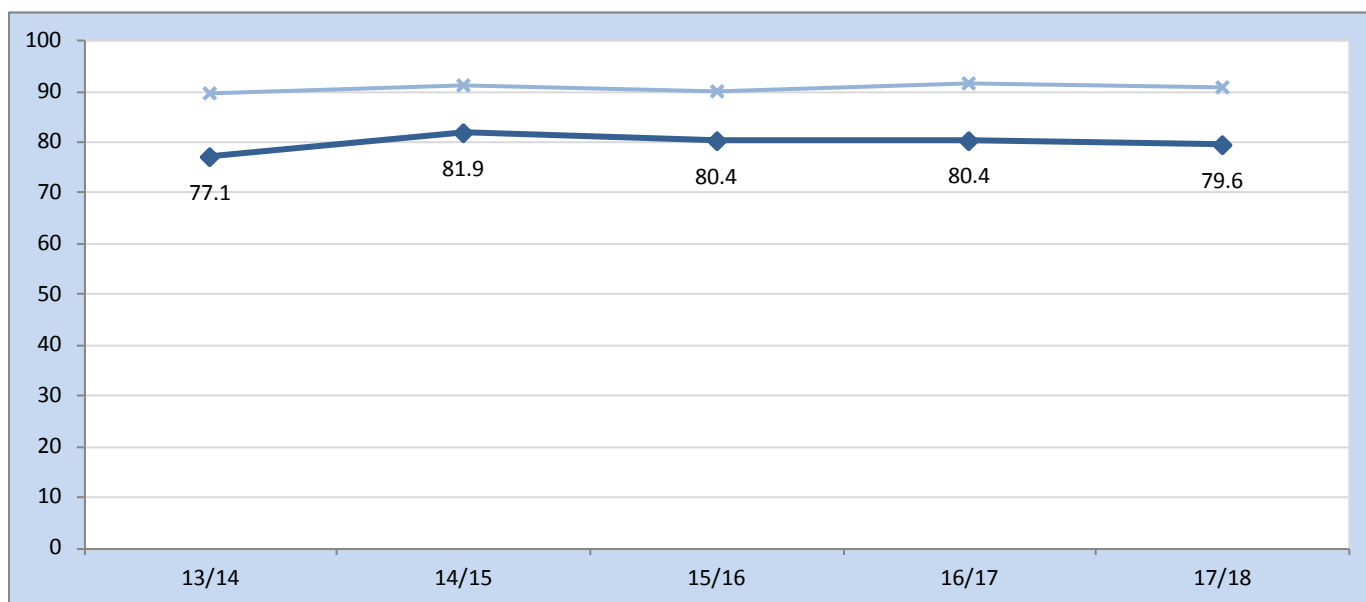
English

Chart 9: Percentage of pupils achieving the expected level (Level 4+) in English: 2013/14 - 2017/18



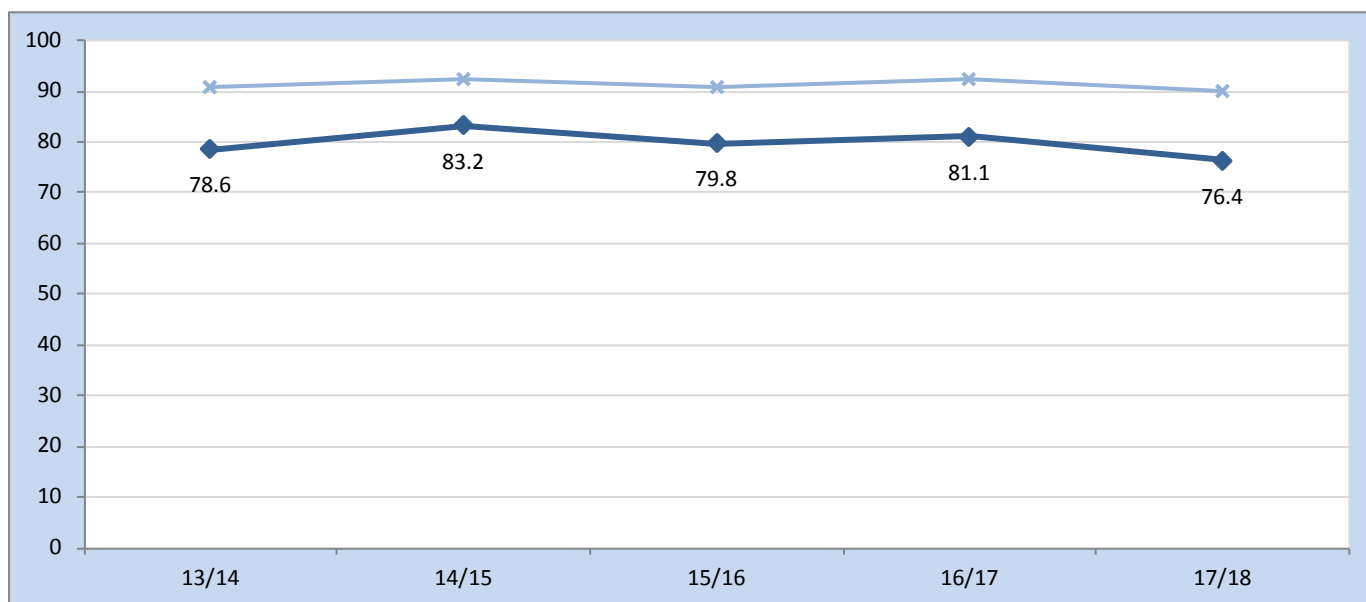
**Mathematics**

**Chart 10: Percentage of pupils achieving the expected level (Level 4+) in Mathematics: 2013/14 - 2017/18**



**Science**

**Chart 11: Percentage of pupils achieving the expected level (Level 4+) in Science: 2013/14 - 2017/18**





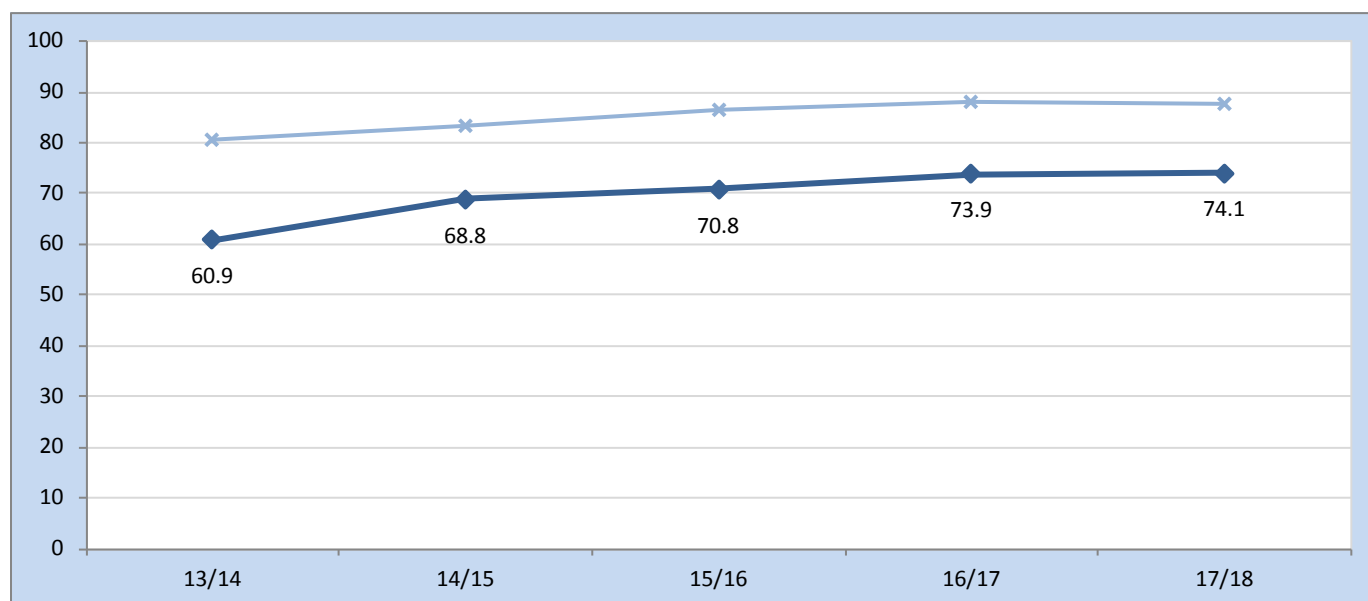
## How well do the pupils perform at KS3?

Number of KS3 pupils

(CSI)	13/14	14/15	15/16	16/17	17/18
Pupils	430	459	428	418	432

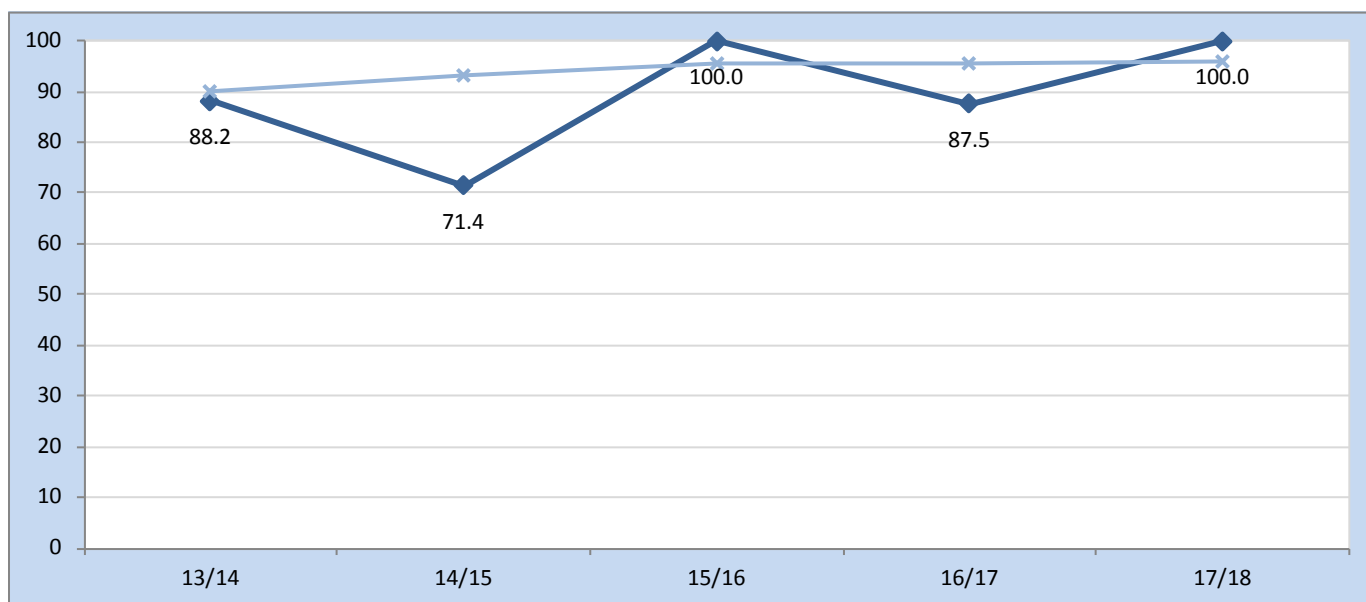
### Core Subject Indicator (CSI)

Chart 12: Percentage of pupils achieving the CSI: 2013/14 - 2017/18



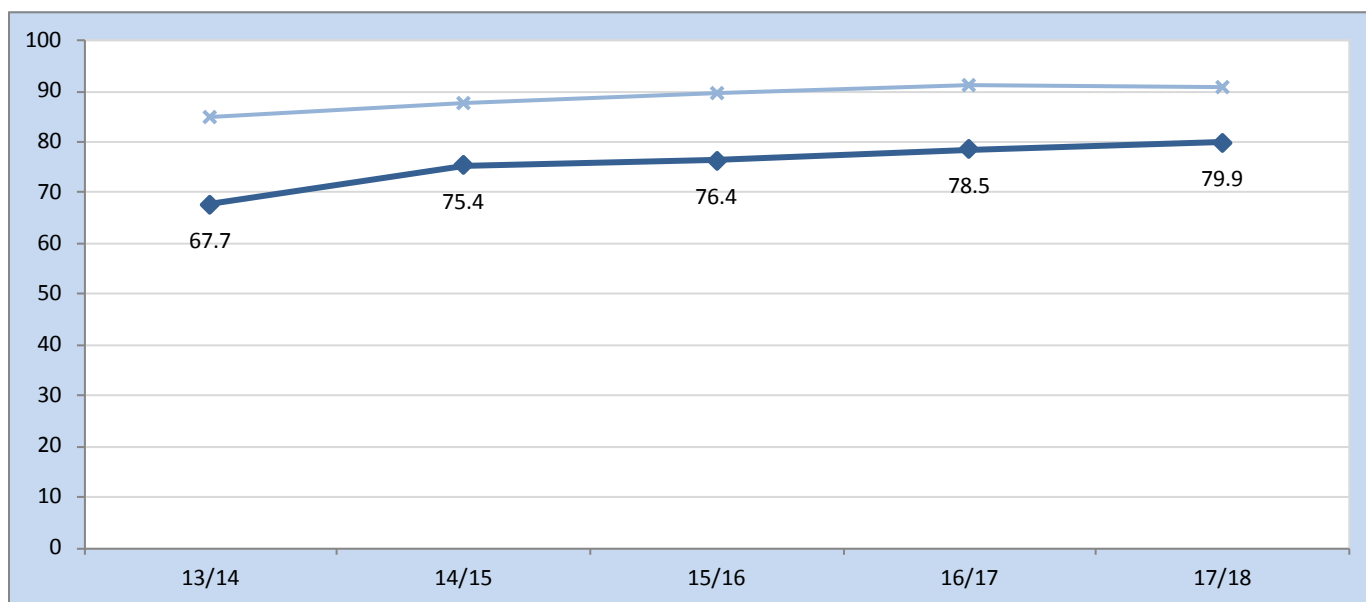
Welsh

Chart 13: Percentage of pupils achieving the expected level (Level 5+) in Welsh: 2013/14 - 2017/18



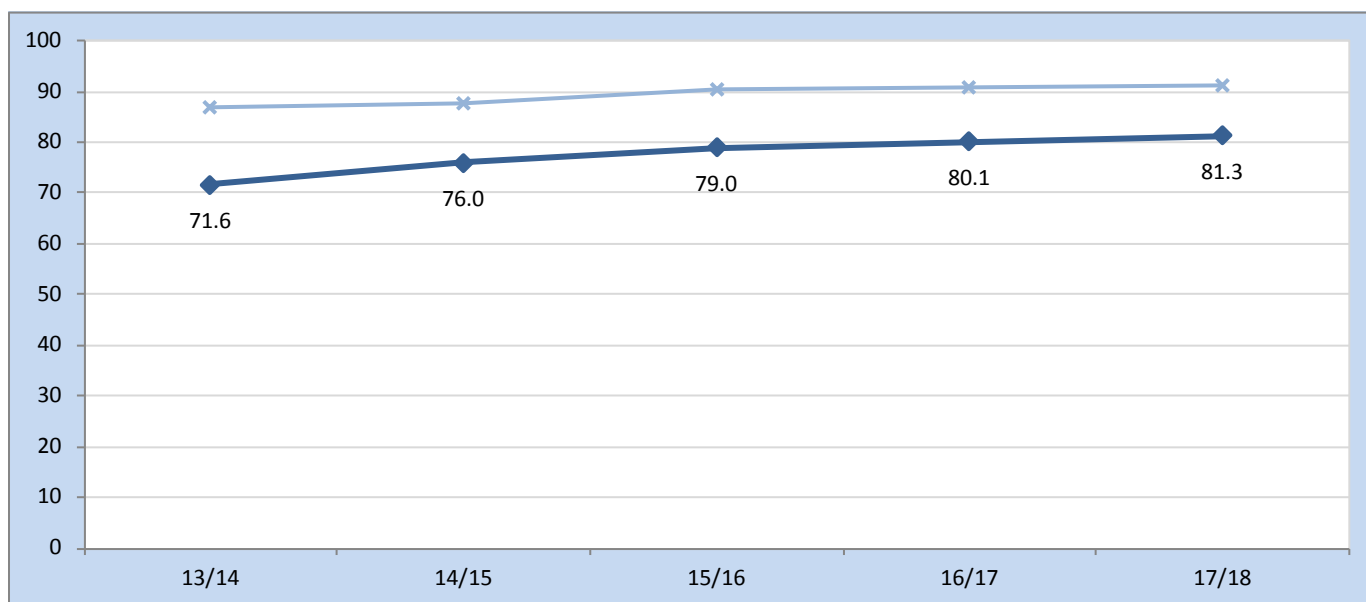
English

Chart 14: Percentage of pupils achieving the expected level (Level 5+) in English: 2013/14 - 2017/18



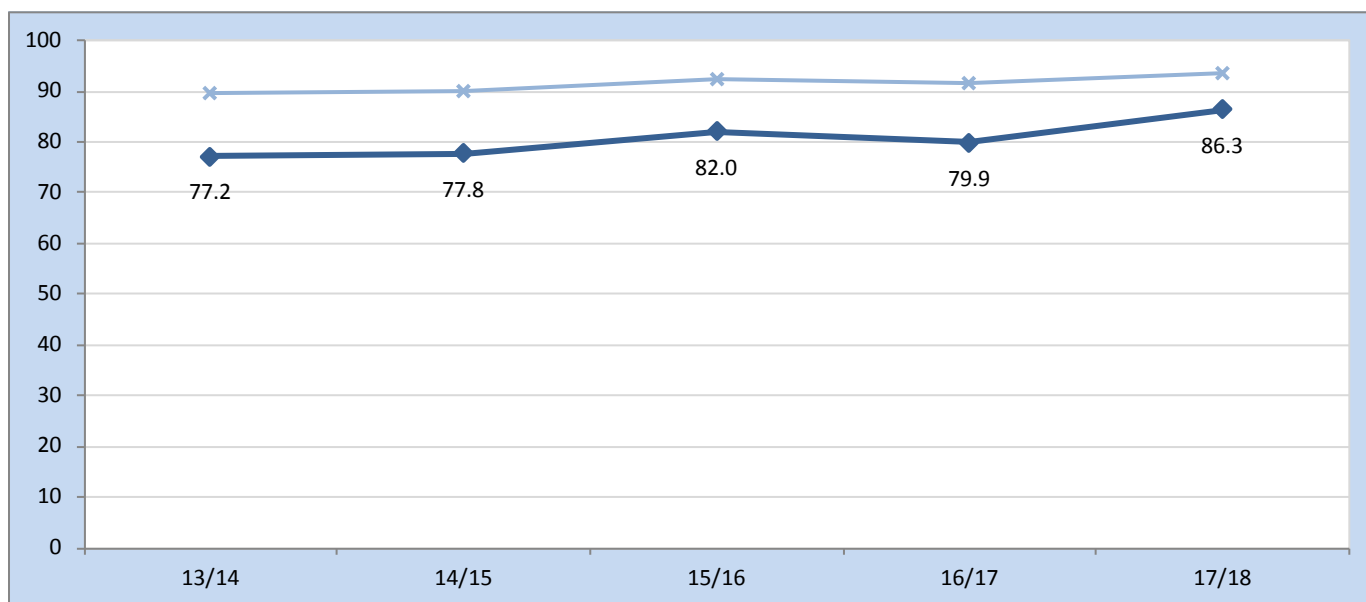
**Mathematics**

**Chart 15: Percentage of pupils achieving the expected level (Level 5+) in Mathematics: 2013/14 - 2017/18**



**Science**

**Chart 16: Percentage of pupils achieving the expected level (Level 5+) in Science: 2013/14 - 2017/18**



## How well do the pupils perform at KS4?

### Number of KS4 pupils

(L2+)	13/14	14/15	15/16	16/17	17/18
Pupils	472	425	381	417	397

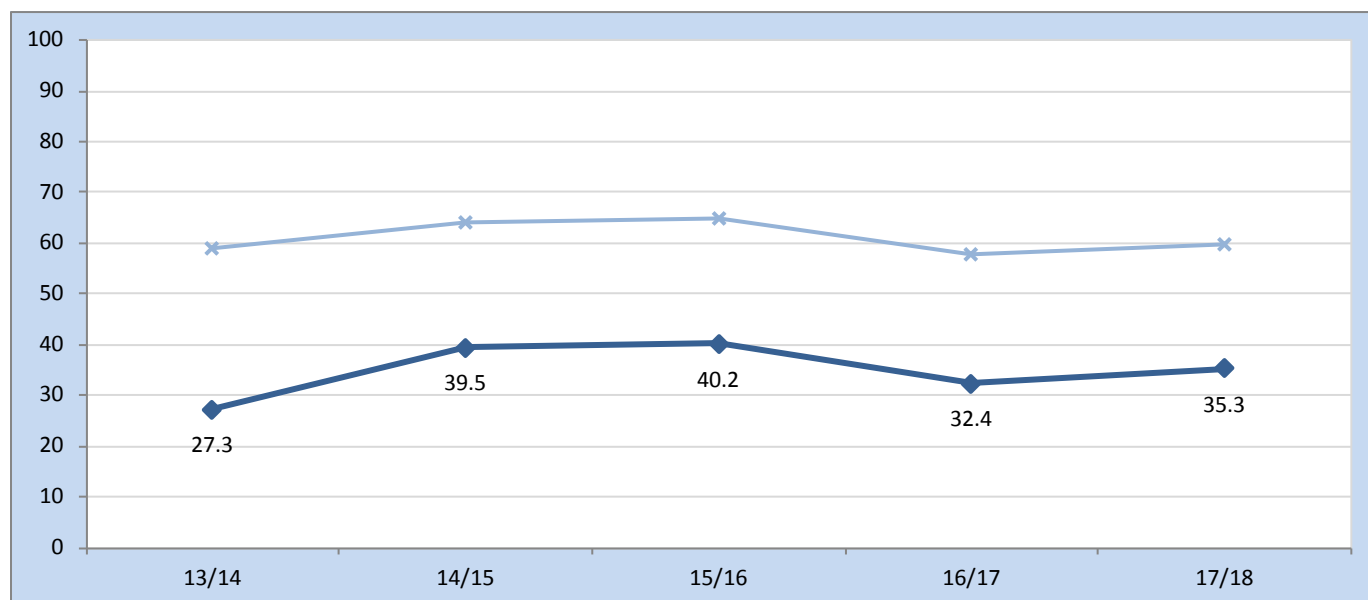
The indicators used at Key Stage 4 are:

- Level 1 threshold (**L1**): Qualifications are achieved equivalent to 5 GCSE grades A\*-G;
- Level 2 threshold (**L2**): Qualifications are achieved equivalent to 5 GCSE grades A\*-C;
- Level 2 threshold including English/Welsh and Mathematics (**L2+**): Qualifications are achieved equivalent to 5 GCSE grades A\*-C, including one in English/Welsh and one in Mathematics;

The "capped points score" (**Cap9**) is calculated by using the best 9 results of all qualifications approved for pre-16 use in Wales, e.g. an A\* GCSE grade is worth 58 points, A is 52 points, B is 46 points etc. It has to include one GCSE first language (the best), Mathematics, Numeracy and the two best Sciences. The average score is then taken across the school.

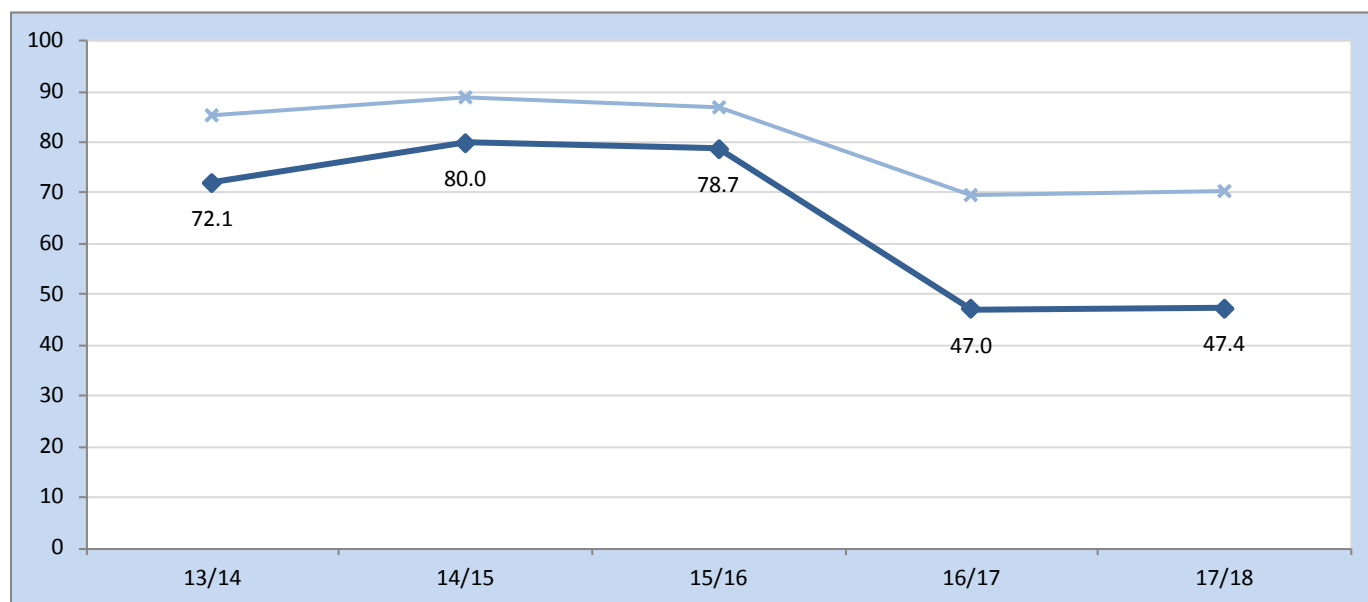
### Level 2 threshold including English/Welsh and Mathematics (L2+)

Chart 17: Percentage of pupils achieving the L2+ threshold: 2013/14 - 2017/18



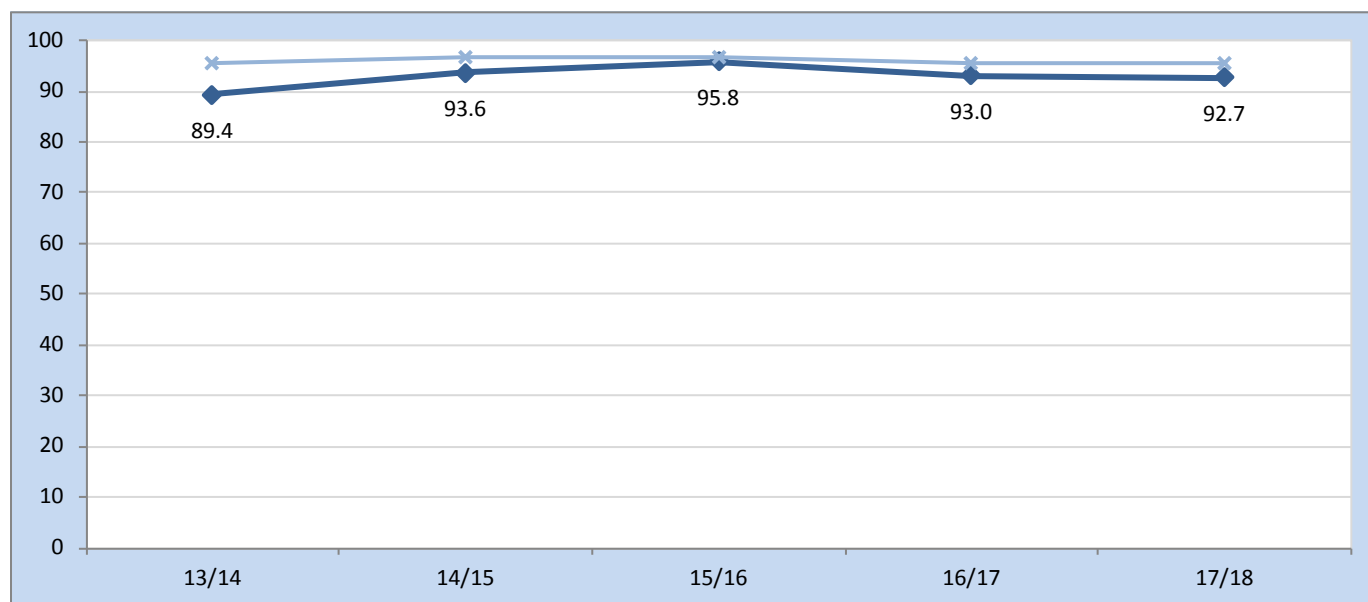
**Level 2 threshold (L2)**

**Chart 18: Percentage of pupils achieving the L2 threshold: 2013/14 - 2017/18**



**Level 1 threshold (L1)**

**Chart 19: Percentage of pupils achieving the L1 threshold: 2013/14 - 2017/18**



**Capped points score (Cap9)**

**Chart 20: (Average) capped points score across all subjects: 2013/14 - 2017/18**

